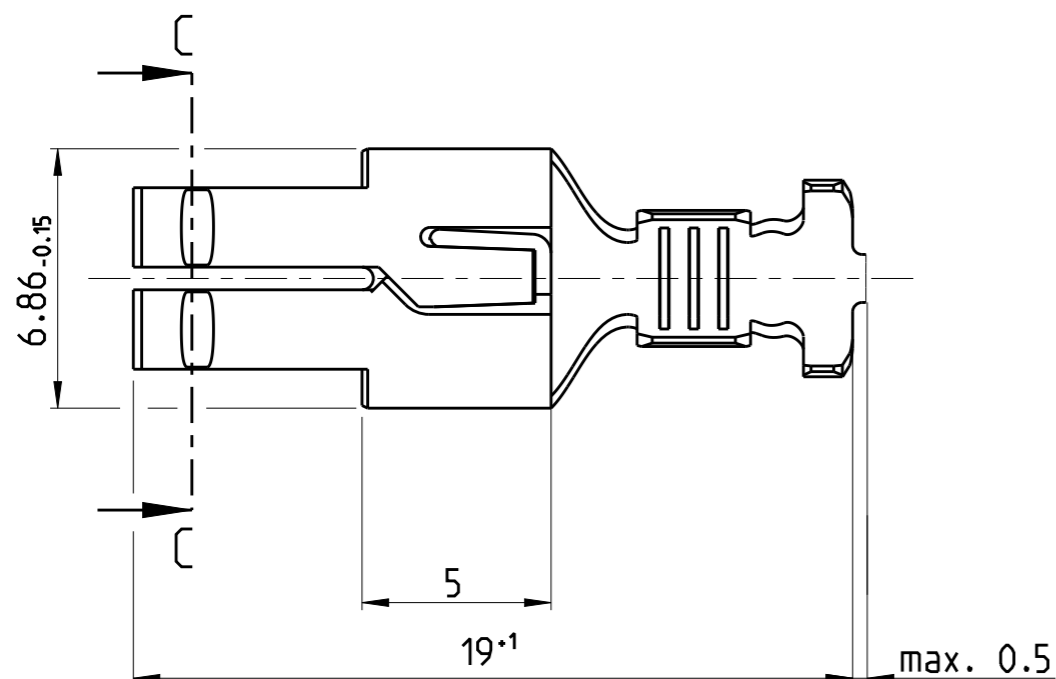
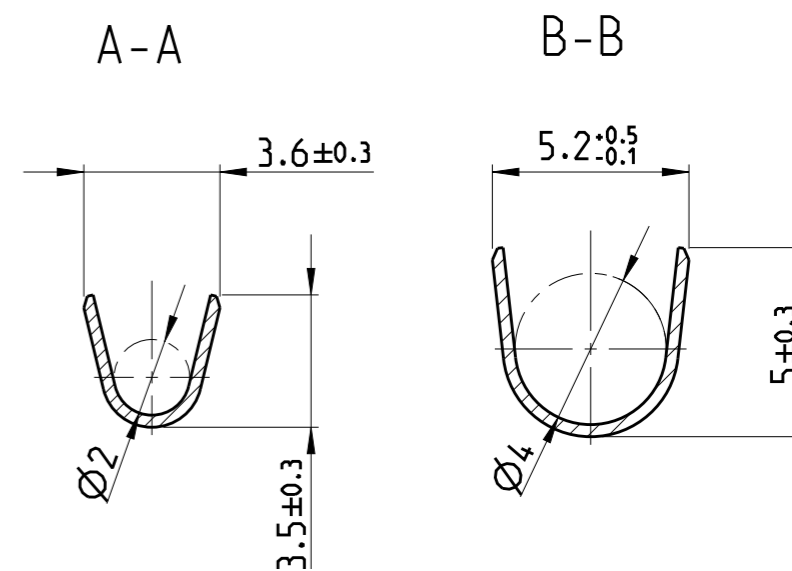
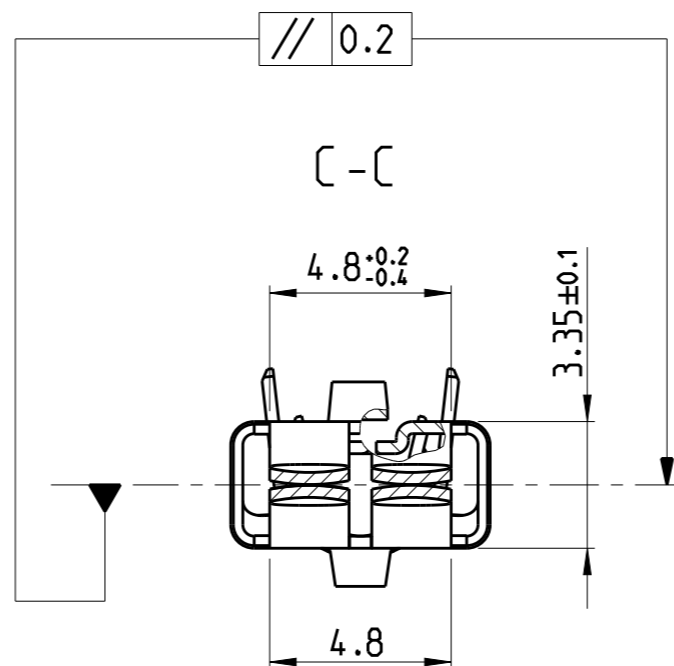
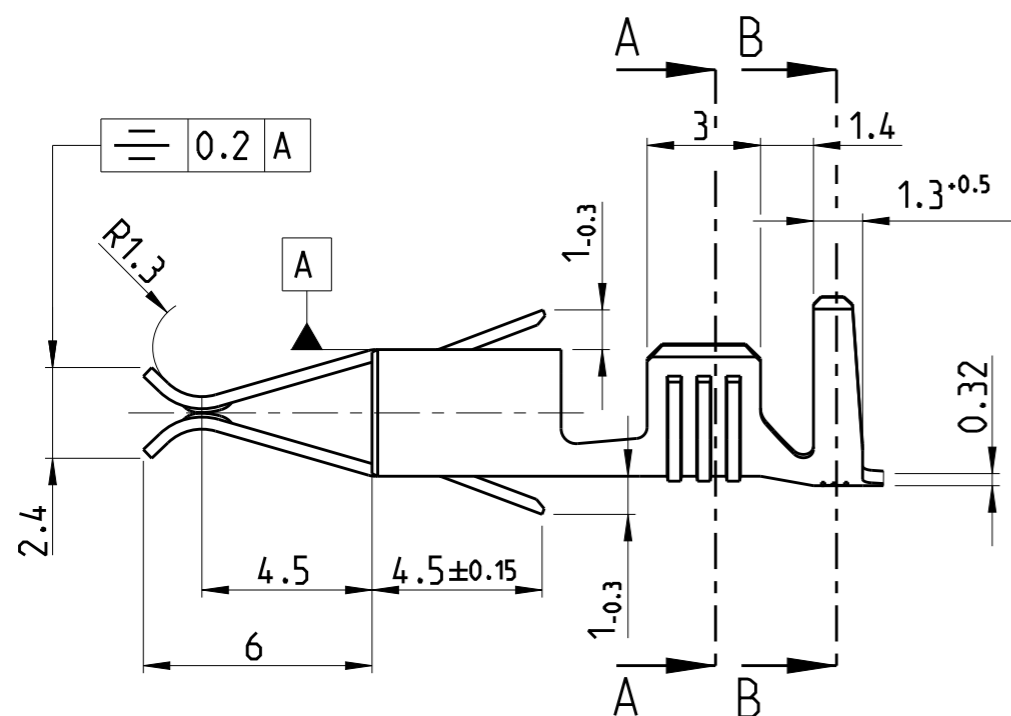


LOC
AL

DIST
2

REVISIONS

P	LTR	DESCRIPTION	DATE	DWN	APVD
C3		ECR-15-017138	01DEC2015	KD	RR
C4		ECR-15-018664	28DEC2015	KD	RR



-	STANDARD-TIMER Kontakt	CuNiSi	964202-4	C
-	STANDARD-TIMER Kontakt	CuFe	964202-3	C
-	STANDARD-TIMER Kontakt	CuSn	964202-2	C
-	STANDARD-TIMER Kontakt	CuZn30	964202-1	C
LOOSE PIECE	FINISH	MATERIAL	PART NO.	REV.

WIRE RANGE: 1.5-2.5 mm²
 INSULATION RANGE: Ø2.4-3.7mm

THIS DRAWING IS A CONTROLLED DOCUMENT.

DWN ATZMANN 06JAN1994
 CHK BARTOSCH 18JAN1994
 APVD -



NAME
 STANDARD TIMER CONTACT
 Kontakt mit zwei Rastfedern

DIMENSIONS:	TOLERANCES UNLESS OTHERWISE SPECIFIED:
mm	±0.2 mm
	0 PLC
	1 PLC
	2 PLC
	3 PLC
	4 PLC
	ANGLES ±1°
MATERIAL	FINISH

PRODUCT SPEC	-
APPLICATION SPEC	-
WEIGHT	-

SIZE	CAGE CODE	DRAWING NO	RESTRICTED TO
A3	-	C-964202	-

Customer Drawing SCALE 5:1 SHEET 1 OF 1 REV C4